

About LHSC

- London's largest employer!
- One of Canada's largest acute care teaching hospitals
- Offer the broadest range of patient services of any hospital in Ontario
- Nearly 15,000 staff, physicians, students and volunteers provide care for more than one million patient visits a year.
- Is the regional trauma and referral centre for southwestern Ontario and beyond.

Our Hospitals



University Hospital

- Cardiac Surgery
- Clinical Neurological Sciences
- Multi Organ Transplantation
- Pathology
- Critical Care and Emergency
- Medicine and Surgery
- Professional Practice Disciplines (all sites)



Victoria Hospital and Children's Hospital

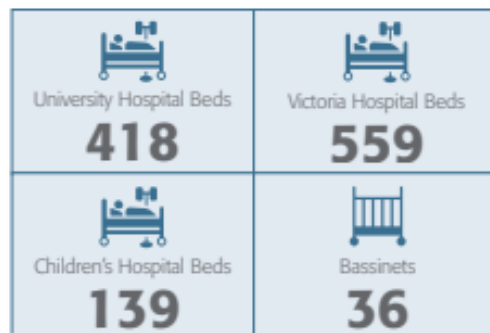
- Obstetrics and Gynecology
- Neonatal Intensive Care (Level 3)
- Acute Mental Health
- Oncology
- Laboratory Medicine
- Critical Care, Trauma and Emergency
- Medicine and Surgery

CARE AT LHSC

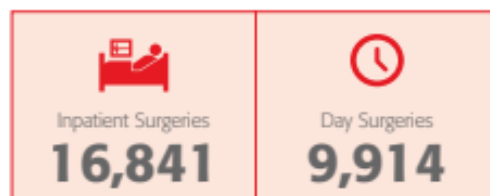
PATIENT CARE



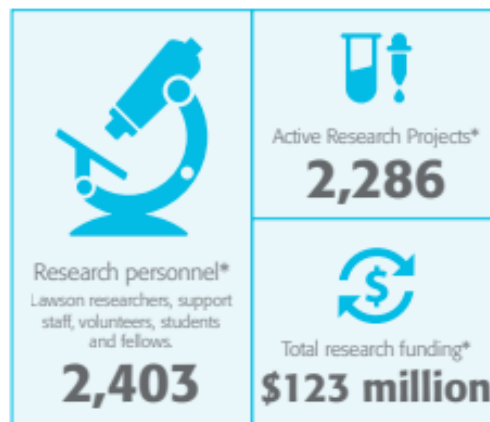
BEDS



SURGICAL CASES

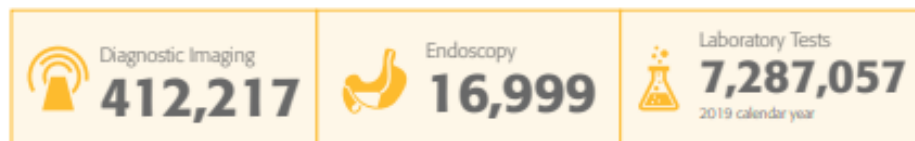


RESEARCH AND INNOVATION



*Total number across LHSC and St. Joseph's Health Care London.

DIAGNOSTIC TESTING



Get in touch with us!

Email

recruitment@lhsc.on.ca

Phone

519-685-8500 ext 34321

Online

www.lhsc.on.ca/careers

